



**Sr. Alexis Hernández**

**Ergro® Set LSS vs Check Plot (Planting in Open Field)**

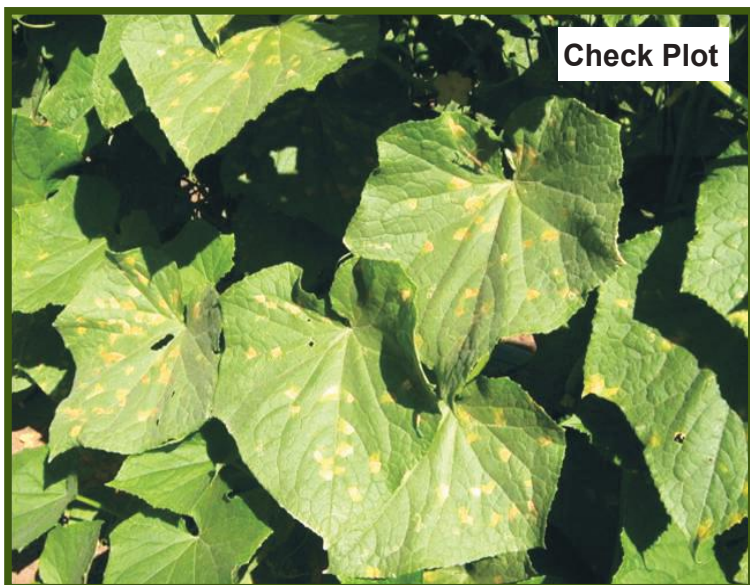
### General Information

Farmer: **Sr. Alexis Hernández**  
 Department: **La Paz**  
 City: **La Paz**  
 Variety: **Tropic Kiu**  
 Harvest: **March, 2008**

### Fertilization

Check Plot:  
 NF (Normal Fertilization)

**Ergro® Set LSS:**  
 NF + Ergro® Set LSS 40 kg/ha



### Economic Information (US \$ DOLLARS)

Cucumber Price / box: \$ 5.00  
**Ergro® Set LSS Cost / ha \$248.00**

#### Yield Results

**Ergro® Set LSS 1,728 boxes/ha**  
 Check Plot: 1,500 boxes/ha

Increment **228 boxes/ha**

**15.2%**

### Profitability (US \$ DOLLARS)

Increment 228 x \$5.00: \$ 1,140.00  
 Additional Investment: \$ 248.00

**Profit / Ha**

**\$892.90**